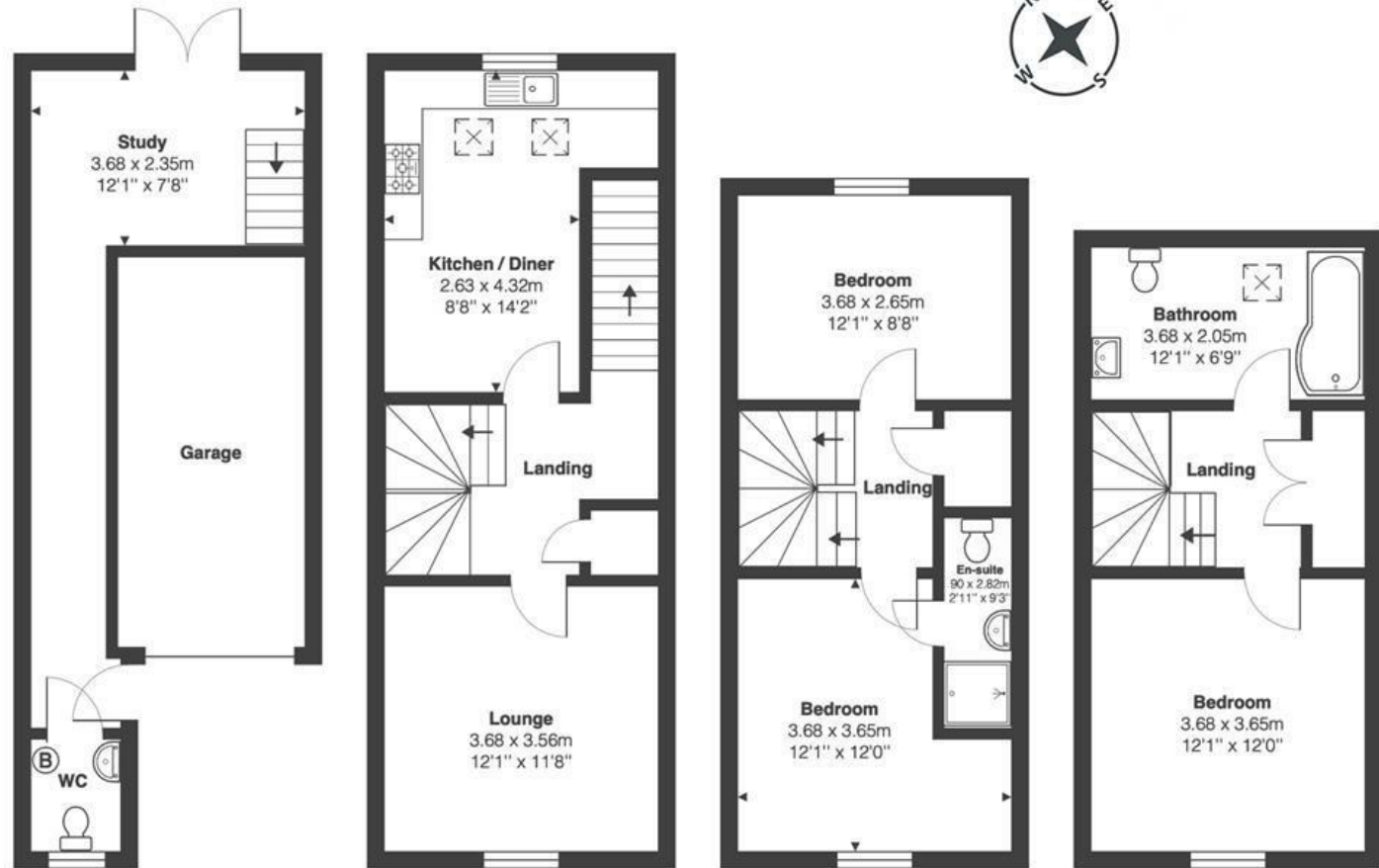


Ashley Down Road

ASHLEY DOWN

APPROXIMATE FLOOR AREA
132.8 SQM / 1429 SQFT



Boardwalk

Ashley Down

, BRISTOL



£550,000



3 Bedrooms



BS7 9JZ



2 Bathrooms

"We feel so lucky for this to have been our home for our time in Ashley Down. Having been able to make it ours has meant it's so easy and comforting to come home to. We've loved hosting numerous friends and family to enjoy it with us, and along with its great location within Bristol it's been a joy to share it with our loved ones. It will be dearly missed."

